

ÖSTERREICHISCHE AUSTRIAN REFERENCE POINT
REFERENZSTELLE for QUALITY ASSURANCE
für QUALITÄT in VOCATIONAL EDUCATION
in der BERUFSBILDUNG and TRAINING

(Self-) Evaluation in QIBB

21.01.2019

PLA on Balancing Self-Evaluation with External
Evaluation in VET Systems Across the Europe

Ljubljana

Jouko Luomi

ARQA-VET

www.arqa-vet.at

Outlook for the next 30 min

- 🕒 ARQA-VET in 5 seconds
- 🕒 The Austrian VET system (very briefly)
- 🕒 QIBB – Austrian VET Quality Initiative
- 🕒 Self-evaluation as integral part of QIBB
- 🕒 Different forms of self-evaluation
- 🕒 Lessons learned - our experiences with self-evaluation
- 🕒 Time to talk...

ARQA-VET: the Austrian Reference Point for Quality Assurance in VET



2

- 🕒 Started on 1 October 2007,
- 🕒 funded by the Ministry of Education, Science and Research.
- 🕒 close cooperation with the Ministry;
- 🕒 is a unit of the OeAD-GmbH
(Austrian Agency for International Cooperation
in Education and Research);
- 🕒 Staff: currently 4 persons (up next Monday 5)

≡ Bundesministerium
Bildung, Wissenschaft
und Forschung

≡ Federal Ministry
Education, Science
and Research

oead
OeAD-GmbH



We support school quality management

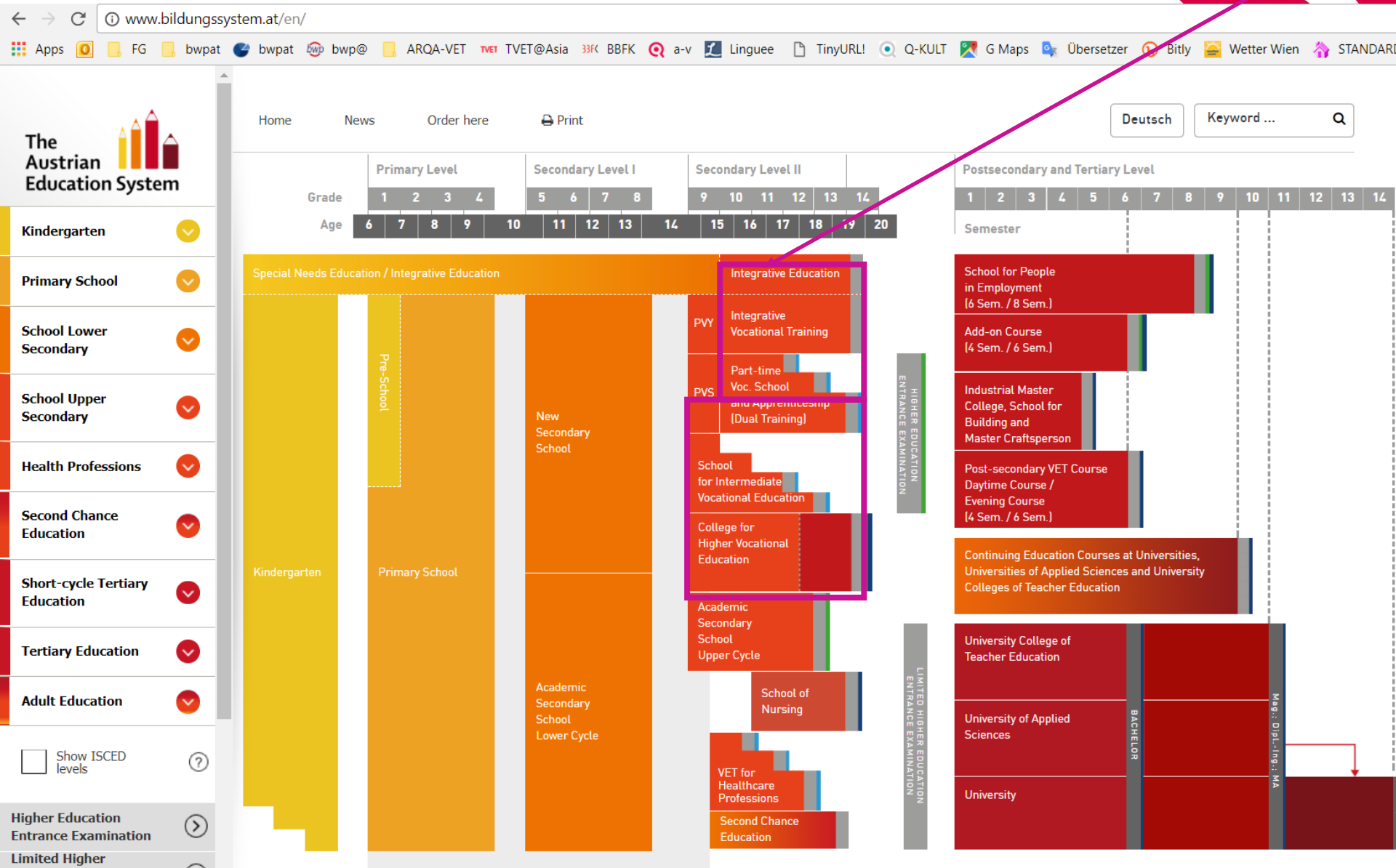
- Q We support the Ministry in all matters in regard to quality management of the school system
- Q We negotiate and take over tasks and projects (on system level)
- Q We develop, test and implement new tools and instruments
- Q We do trainings
- Q We participate in EU projects
- Q We give thematic inputs
- Q



QUALI-QIBB



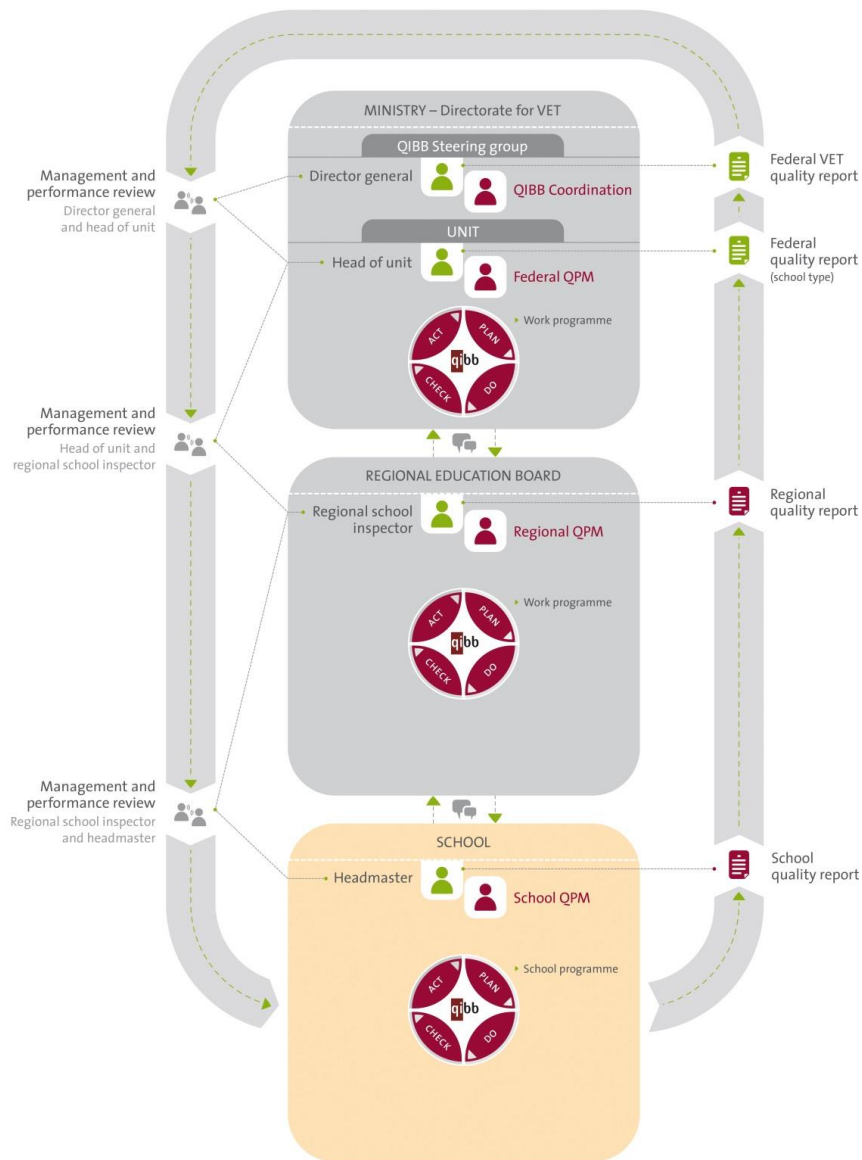
ARQA-VET



QIBB – a QM system for 681 schools

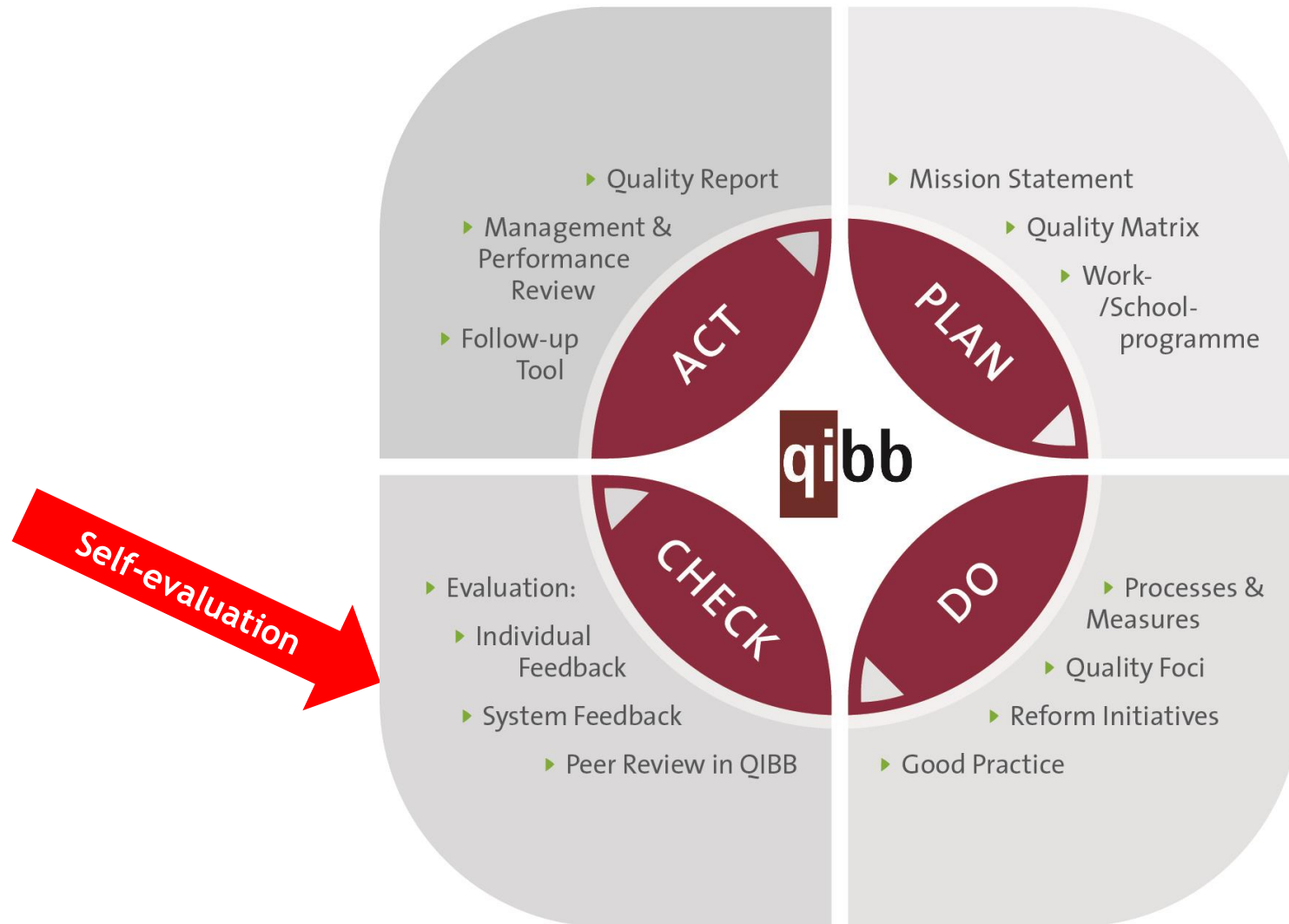
- Q QIBB ist the **common framework** for QM encompassing all I-VET school types.
- Q QIBB includes **all organisational levels** (schools, school inspection, Ministry).
- Q QIBB has implemented a set of QM instruments
- Q Support structure: quality managers at every level (school, regional, federal)
- Q Focus on objectives and self-evaluation
- Q **No compulsory external evaluation**
Peer Review in QIBB is voluntary!





QIBB architecture: a multi-level system

Self-evaluation as integral part of QIBB



Self-evaluation within QIBB

- 📍 Self evaluation is crucial within QIBB - accountability is based on self-evaluation
- 📍 Self-evaluation results are part of quality reports
- 📍 Quality reports are the basis for Management Performance Reviews



Evaluation plans

Q Every Institution (school) is working with evaluation plans

Q Evaluation plan include:

- Quality areas/fields
- Evaluation methods
- Time schedules for evaluation
- Indicators

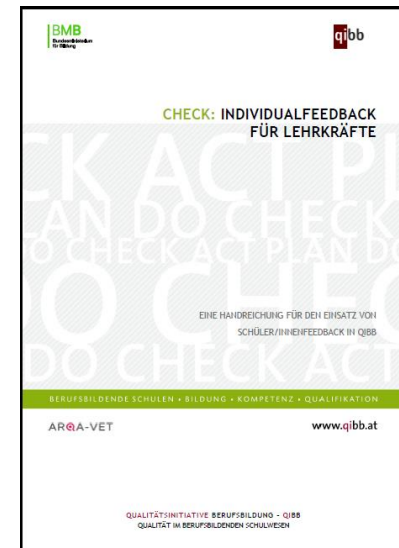
Two different forms of self-evaluation

Q System feedback

- supports organisational development/school development

Q Individual feedback

- supports individual development of persons, for example teachers, principals, school inspectors



Lessons learned

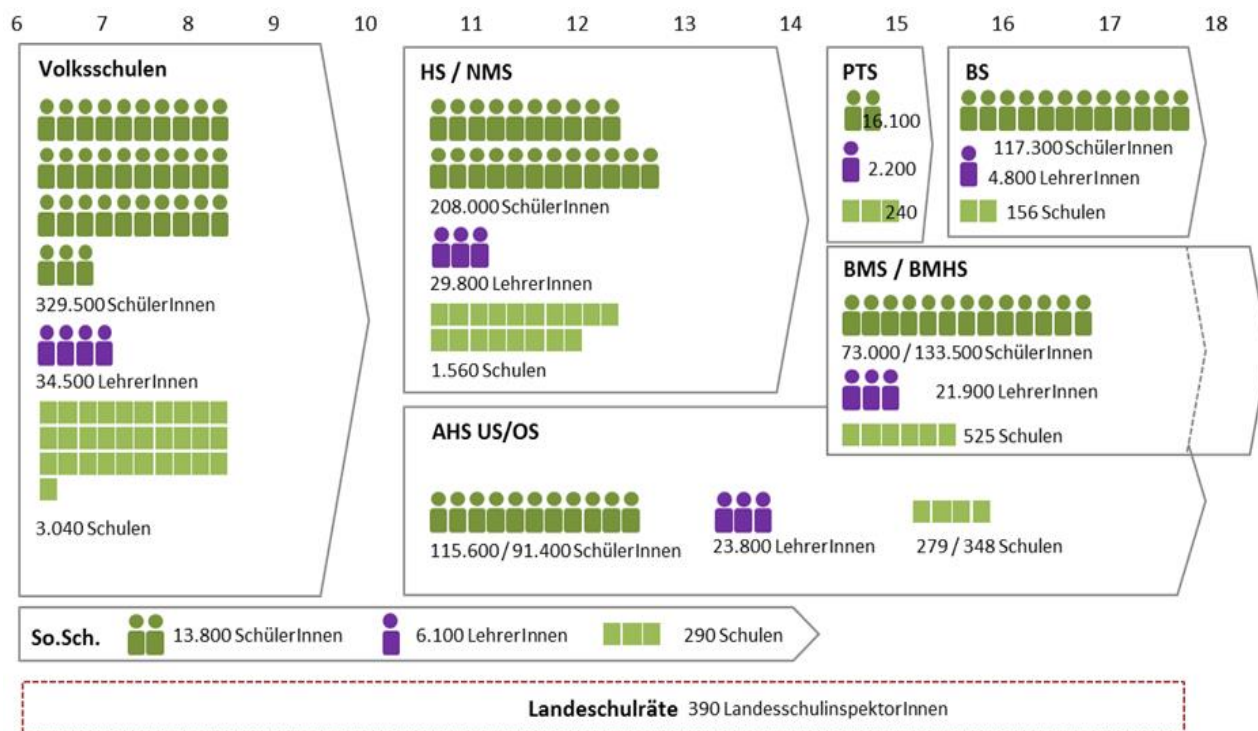
- 🕒 Don't stress too much on self-evaluation - systematic implementation of the **whole quality cycle** necessary
- 🕒 Make clear why and how self-evaluation instruments can be useful for improvements
- 🕒 Use a mix of quantitative and qualitative methods
- 🕒 Don't evaluate too much – avoid useless data
- 🕒 Evaluation as tool to support (continuous) improvement – make use of the results



Change we must - Latest developments

- 🕒 Reform in the education system
- 🕒 More school autonomy (www.schulautonomie.at)
- 🕒 Integrated QM for IVET and General Education
- 🕒 External evaluation
- 🕒 Agency for Quality Development and Assurance

12



5.523 schools
- 681 VET schools
(Zahlenspiegel 2017)





Thank you for your attention –
hvala!

ARQA-VET
jouko.luomi@oead.at
www.arqa-vet.at